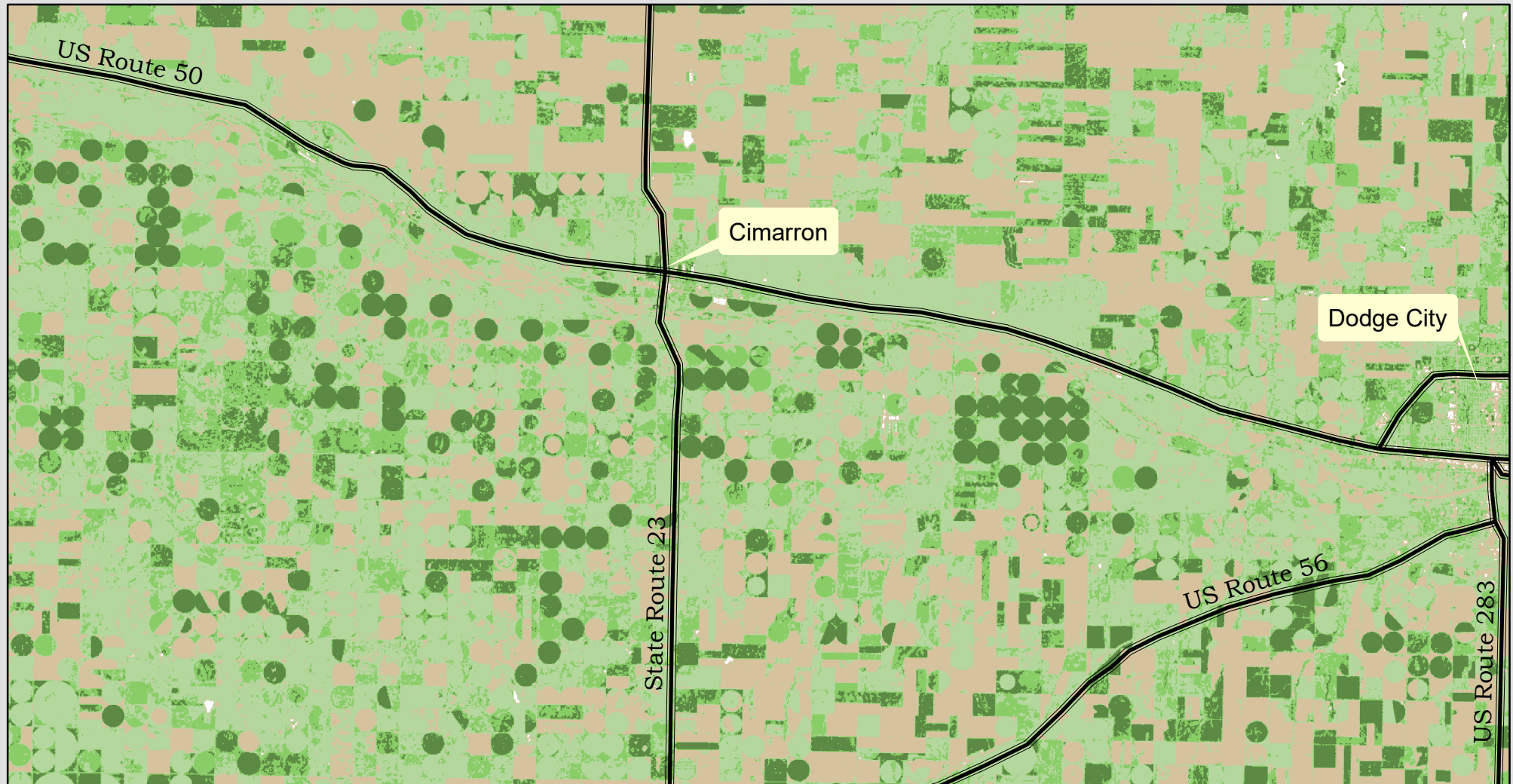


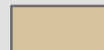





# NDVI West of Dodge City, Kansas



-  Highways
-  Pavement
-  Bare Earth
-  Low Vegetation
-  Medium Vegetation
-  Dense Vegetation

0 1.25 2.5 5 Miles  
1:200,000

Steps used to create NDVI image:  
1. Downloaded data from the USGS, Landsat 8 satellite  
2. Clipped bands 5 (NIR) and 4 (RED) into ESRI grid images  
3. Calculated  $NDVI = (NIR - Red) / (NIR + Red)$  using the Plus and Minus tools  
4. Calculated final image by Raster Calculator



Coordinate System: WGS 1984  
Projection: UTM Zone 14N  
Source of Data: USGS  
Landsat 8 OLI  
September 29, 2016  
Prepared by: Beverly Lorenzana  
Collin College Summer 2017