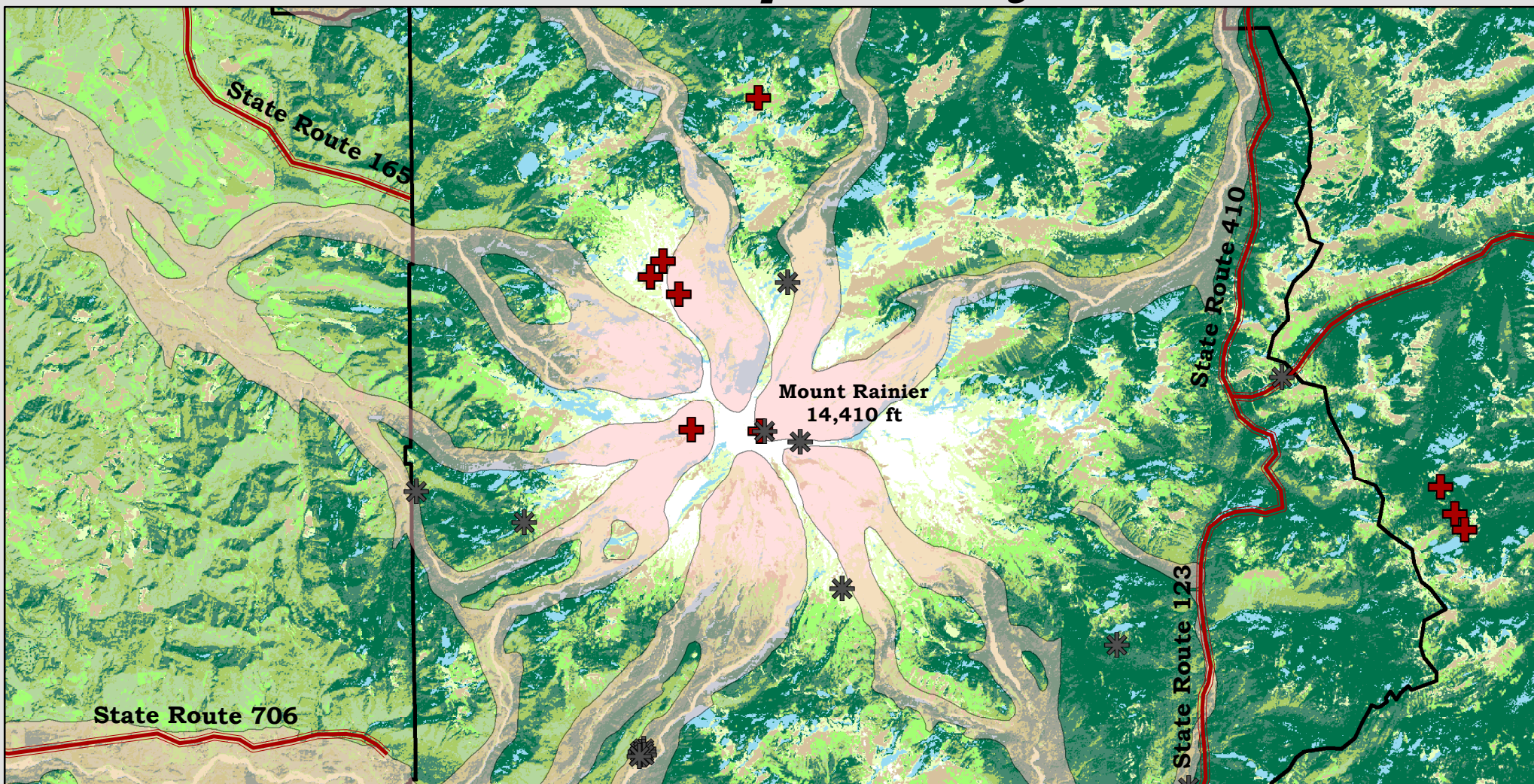


Mount Rainier National Park's Volcano Flow, Vents & Springs

ISO Cluster Unsupervised Image



0 1 2 4 Miles
1:200,000



- | | | | |
|--|-----------------------|--|------------------------|
| | Spring Locations | | Dense Vegetation |
| | Volcano Vents | | Light Dense Vegetation |
| | Roads | | Medium Vegetation |
| | Lava Flow | | Light Vegetation |
| | Park Boundary | | Very Light Vegetation |
| | Water | | Dry Vegetation |
| | Very Dense Vegetation | | No Vegetation |

Steps used to create ISO image:

1. Downloaded data from USGS, Landsat 8 Satellite
2. Clipped bands 1 through 8 into ESRI GRID images
3. Used the ISO Cluster Unsupervised Classification tool with 8 bands & 9 classes

Coordinate System: WGS84
Projection: UTM Zone 10N
Source of Data: USGS
Landsat 8 OLI
February 21, 2017
Washington State Department
of Natural Resources
Prepared by: Beverly Lorenzana
Collin College Summer 2017